

# PEERNET TIFF Image Printer

How To Convert Word Files to TIFF



## OVERVIEW

Easily convert **Word to TIFF** with just a few clicks of the mouse!

As simple as printing, TIFF Image Printer works with any Windows® application so you can quickly **convert Word to TIFF** in seconds, making it the Word to TIFF converter you will turn to time and again.

## WHY CONVERT WORD TO TIFF?

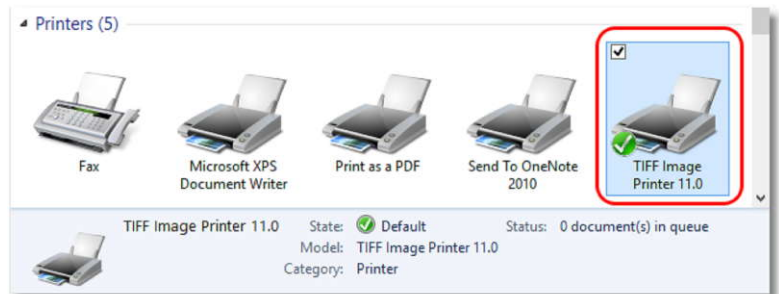
Convert Word to TIFF images to protect the information in your Word files. TIFF images are very difficult to alter and can be viewed by virtually anyone. TIFF is a common format for faxing, and is often used in document imaging, document archiving and eDiscovery software.

## TUTORIAL VIDEO

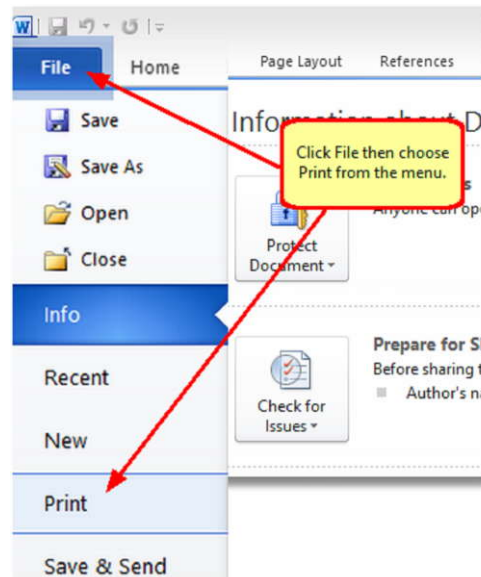
Watch on YouTube: <https://www.youtube.com/watch?v=1Kjd4o-Kxi4>

## STEPS FOR CONVERT WORD FILES TO TIFF FILES

1. Install **TIFF Image Printer** onto your computer. This will create a new virtual printer in your *Printers* folder.

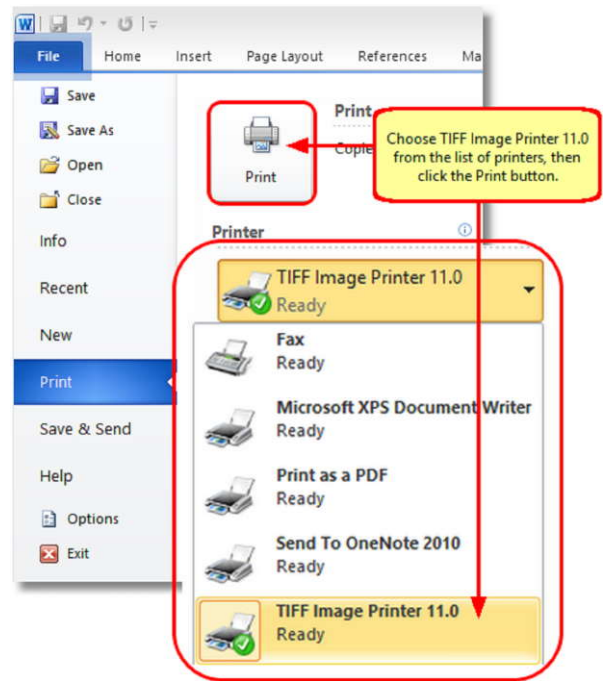


2. Open your document in Microsoft Word and click **File->Print** from the application menu.

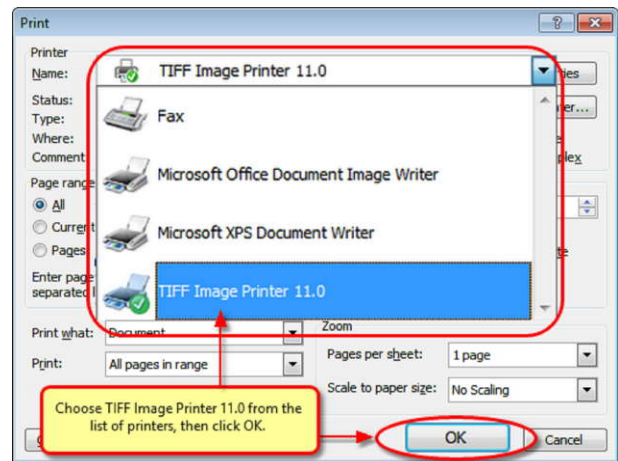


3. Choose TIFF Image Printer 11.0 from the printers list, then click the **Print** button or the **OK** button.

- You will see this if you are printing from **Office 2010**:

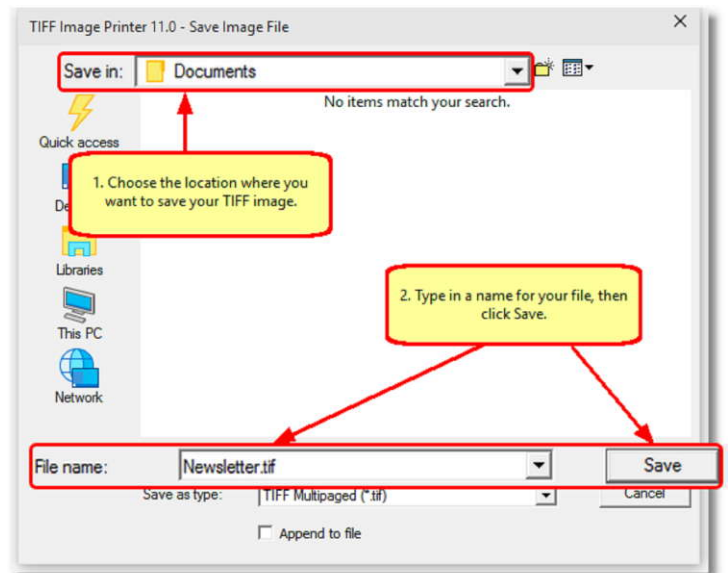


- You will see this if you are printing from **Office 2007 and earlier**:



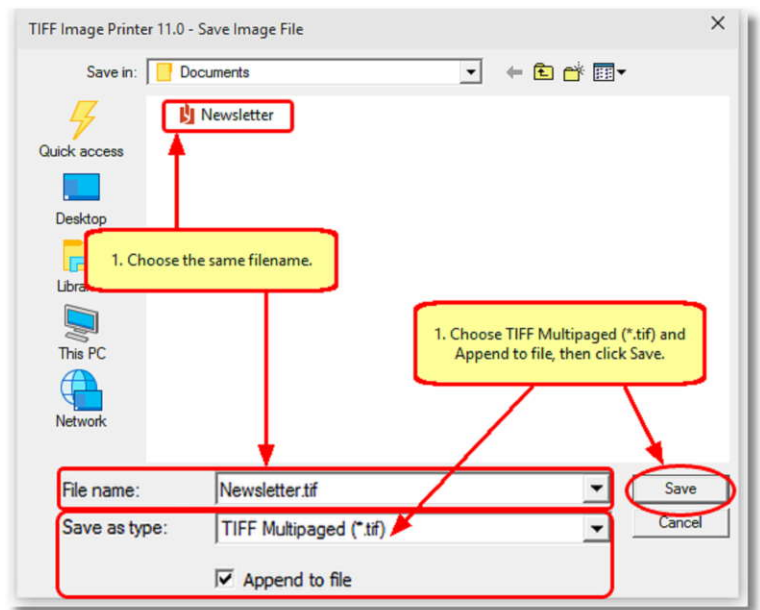
4. In the **Save Image File** dialog that appears:

- Select **TIFF Multipaged (\*.tif)** as the output file type and choose where to save your new TIFF image.
- Click the **Save** button to convert your Word to TIFF.



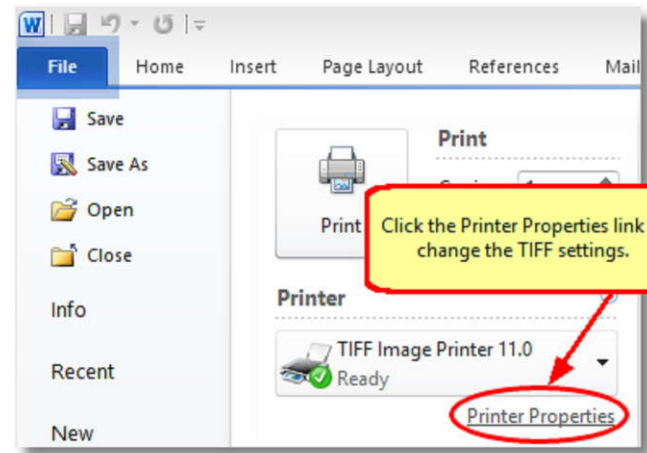
5. Your Word document will be converted to TIFF and saved in the location specified.

6. Merge multiple Word documents into a single TIFF with the **Append** feature.



7. Convert Word into TIFF images that meet your exact requirements with the many options available. The settings used when converting Word to TIFF can be accessed through the **Print** dialog when you are printing your document. See [Setting Printing Preferences](#) in the on-line user guide for more information.

- If you are printing from **Word 2010**:



- If you are printing from **Word 2007**:

