

PEERNET TIFF Image Printer

How To Convert JPG to TIFF



OVERVIEW

Convert **JPG to TIFF** quickly and easily.

Just by printing to the **TIFF Image Printer** you can convert a JPG to a TIFF image in seconds. Create separate TIFF images for each JPG or use the append feature to effortlessly combine more than one JPG to TIFF.

Do more than just **convert JPG to TIFF** – TIFF Image Printer works with any Windows® application that can print, making it the TIFF converter you will turn to time and again.

WHY CONVERT JPG TO TIFF?

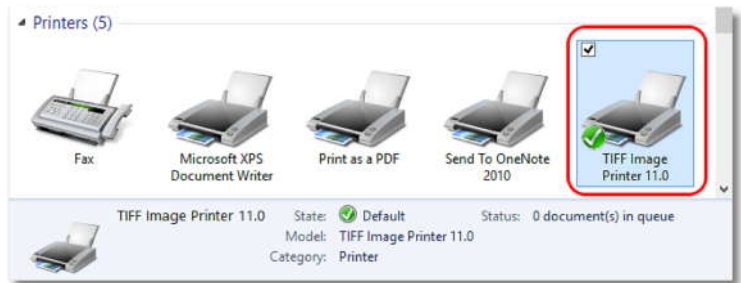
You often need to combine JPG images into a single TIFF image for easy distribution as well as to maintain image quality in a protected, portable format. TIFF is commonly used in document imaging, document archiving and eDiscovery software and can be viewed by virtually anyone.

TUTORIAL VIDEO

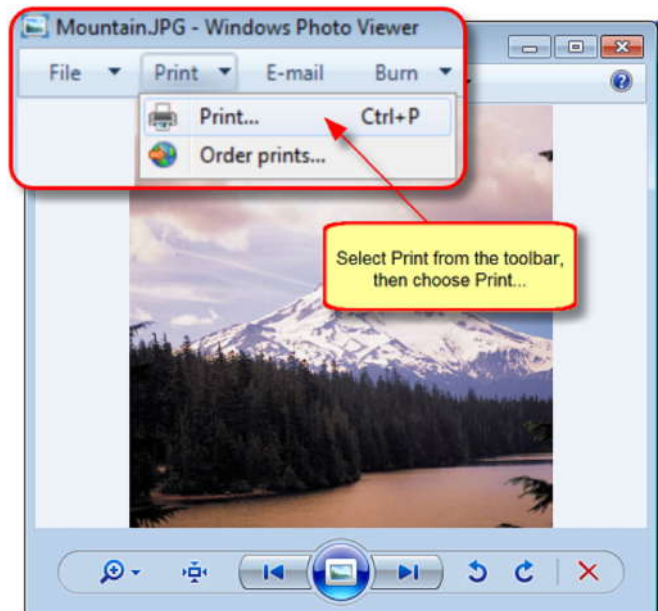
Watch on YouTube: <https://www.youtube.com/watch?v=e-xgBq1Zby8>

STEPS FOR CONVERTING JPG TO TIFF FILE

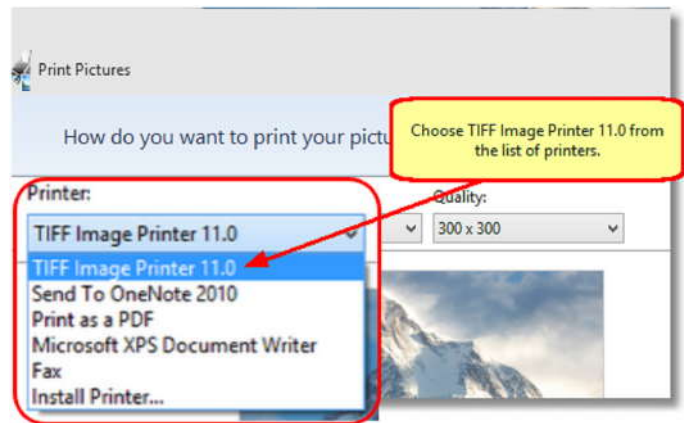
1. Install **TIFF Image Printer** onto your computer. This will create a new virtual printer in your *Printers* folder.



2. Open your JPG image in your favorite image viewer and select **Print** from the toolbar, then choose the **Print...** option.

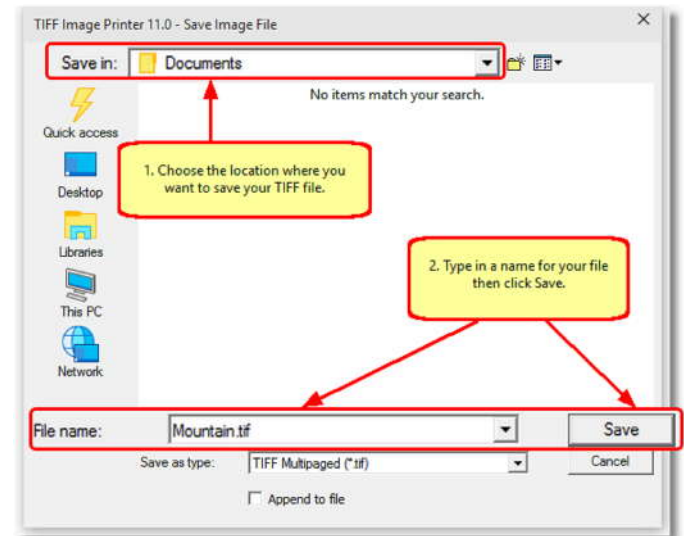


3. Choose TIFF Image Printer 11.0 from the printers list, then click the **OK** button.



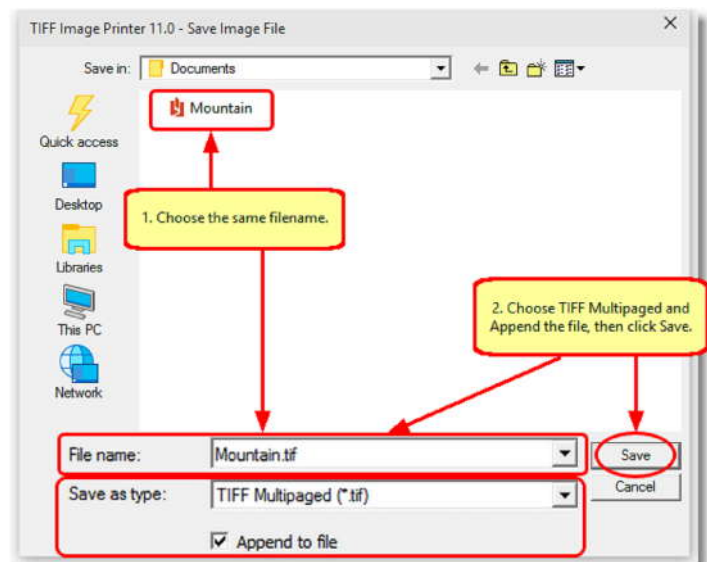
4. In the **Save Image File** dialog that appears:

- a. Select **TIFF Multipaged (*.tif)** as the output file type and choose where to save your new TIFF image.
- b. Click the **Save** button to convert your **JPG to TIFF**.



5. Your JPG image will be converted into a TIFF image and saved in the location specified.

6. Merge multiple JPG image together into a single multipaged TIFF image with the **Append** feature.



7. Convert your JPG images into TIFF images that meet your exact requirements with the many options available. The settings used when converting JPG to TIFF can be accessed through the **Options** link when you are printing your JPG images. See [Setting Printing Preferences](#) in the on-line user guide for more information.

