

PEERNET File Conversion Center

Batch Convert JPEG to TIFF with File Conversion Center



OVERVIEW

Converting your JPG images from one format to another has never been easier! With [File Conversion Center](#) you can convert a single image or an entire folder of images with as little as a single click.

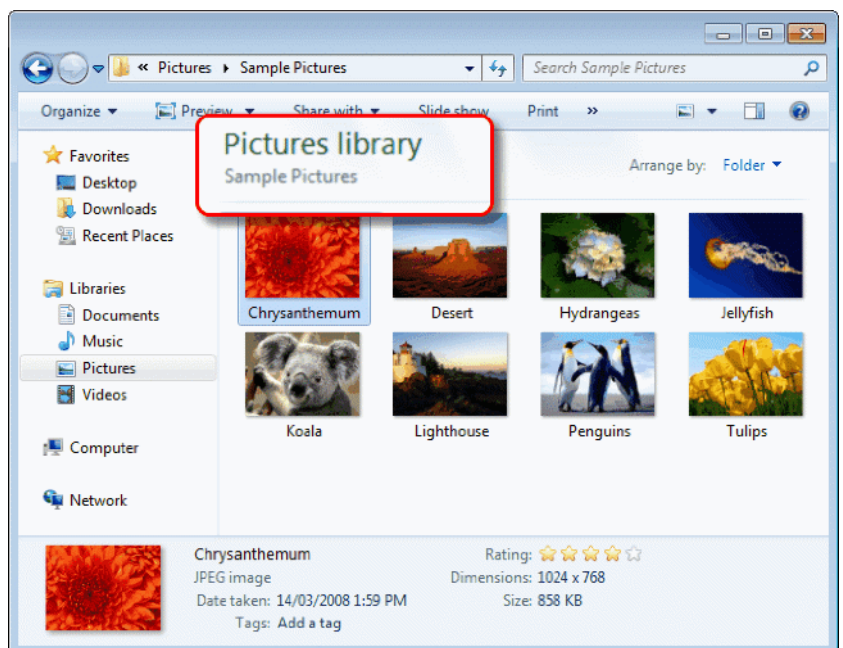
File Conversion Center can convert between the following image formats:

- JPG
- TIFF
- PNG
- BMP
- GIF
- EPS
- PS
- PCX
- DCX

STEPS TO BATCH CONVERT JPEG TO TIFF

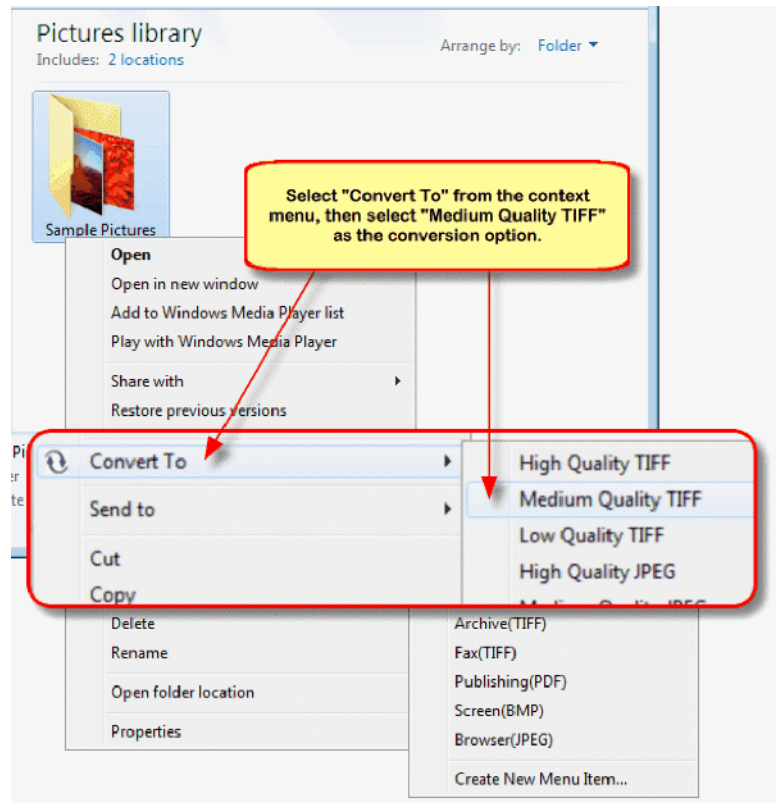
File Conversion Center is the most convenient [file converter](#) around, as it comes with a set of predefined conversion PROFILES for the most common image formats, including **TIFF**, **JPG** and **BMP**. The following steps will use the predefined conversion setting **Medium Quality TIFF** to convert an entire folder of JPG images into TIFF images. The new TIFF images are created in the same location as the original files; the original images remain untouched in the folder.

1. Find the folder of images on your computer. Below we are using the *Sample Pictures* folder in the *Pictures library* (or folder) included with most Windows® 7, Windows Vista™ and Windows® XP installs. Your JPG images may be different from what is shown here.

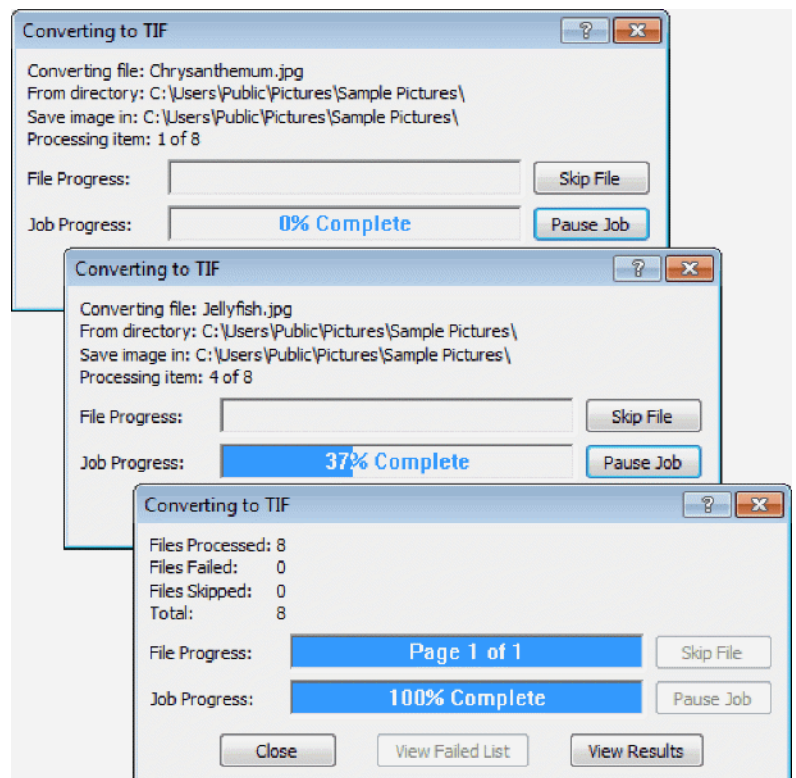


2. Go to the **Pictures folder** on Windows® 7 and Windows Vista™ or the **My Pictures** folder if you are running Windows® XP. In the folder, select the *Sample Pictures* sub-folder with the mouse and then right-click on the folder icon to access the context menu.

- a. From the context menu, select the **Convert To** menu item.
- b. Another menu will appear displaying conversion options; select **Medium Quality TIFF** from this menu.



3. A progress dialog box **Converting to TIFF** is displayed while the images in the folder are being converted. The new TIFF images are created in the same location as the original JPG images. Click the **Close** button to dismiss the progress dialog when the conversion is complete.



4. The new TIFF image has been created for every JPG file; the new images have been created in the same location as the original JPG images.

