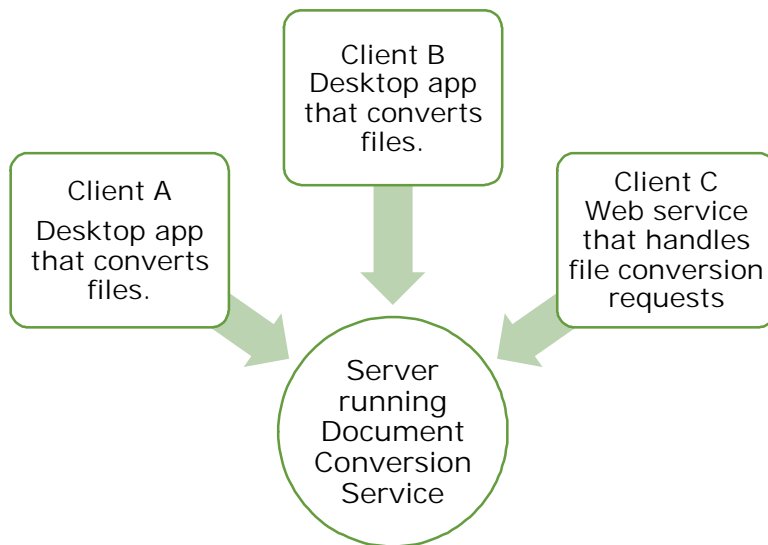




## Client Server Conversion Quick Start Guide

This guide will introduce you to client-server, or remote, conversion using Document Conversion Service and its included conversion tools.

Remote conversion allows the heavy work of conversion to be done on a single computer, the *server*, while one or more *client* services or applications run on other computers.



## Security, Permissions, Accounts and Groups

The trickiest part of client-server conversion is managing access permissions for the users on the client machines, the account that runs Document Conversion Service on the server, and the folders that contain the files to be converted.

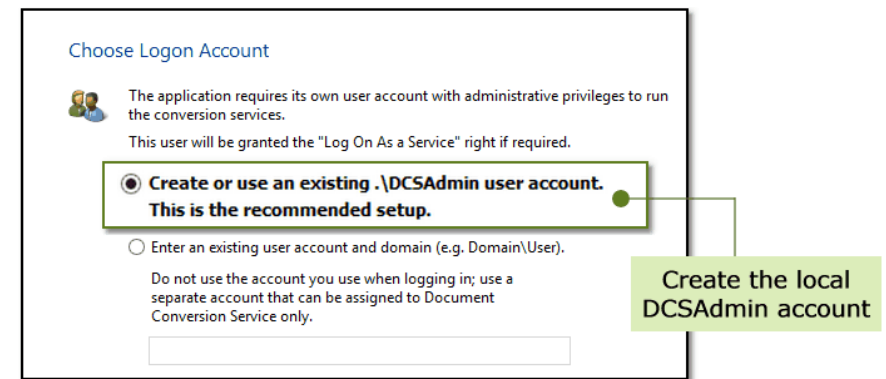
This access is granted through the use of a single local user group, *Document Conversion Service Users*, and a network share folder, *DCSREMOTE*, both created when Document Conversion Service is installed.

## Set up the Server

The steps in this section of the guide assume that both the server and all client machines are on the same domain and that the client logons are also domain accounts.

### Step 1: Installing Document Conversion Service

Install Document Conversion Service and when prompted for the Logon Account allow the install to create and use the local administrator account *DCSAdmin*. Take note of the password you set up for this account, you will need it for each client machine.



### Step 2: Groups, Permissions and the Network Share Folder

The install creates the local group *Document Conversion Service Users* and adds both the *DCSAdmin* account and the *Authenticated Users* group as members of this group.

It also creates the network share folder *C:\PEERNET\DCSREMOTE* with the share name *DCSREMOTE*. The local group *Document Conversion Service Users* is given full permissions on the network share. This network share is used as the temporary conversion folder needed by the clients and the server to access the files to convert.

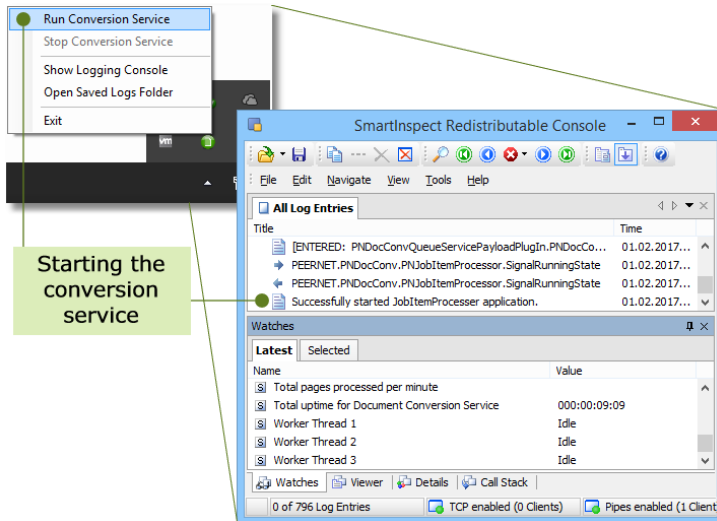
# PEERNET Document Conversion Service 3.0



## Step 3: Starting Document Conversion Service

Start the document conversion service from the Run Conversion Service menu item in the system tray icon's menu.

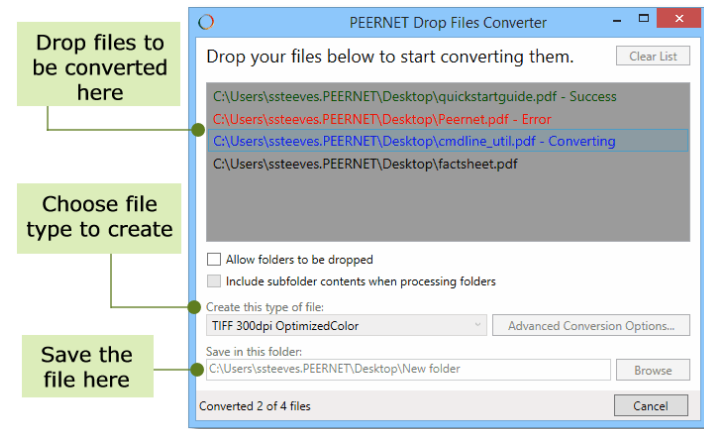
The *Successfully started JobItemProcessor application* message appears in the All Log Entries section of the logging console when the service is ready to convert files.



## Step 4: Test the Server

Open the Drop Files Converter utility from Programs - PEERNET Document Conversion Service 3.0 – Drop Files Converter.

Drag files onto the gray drop area to test that your server has been configured correctly and is converting files.





## Setup the Client

### Step 1: The Client Setup Redistributable

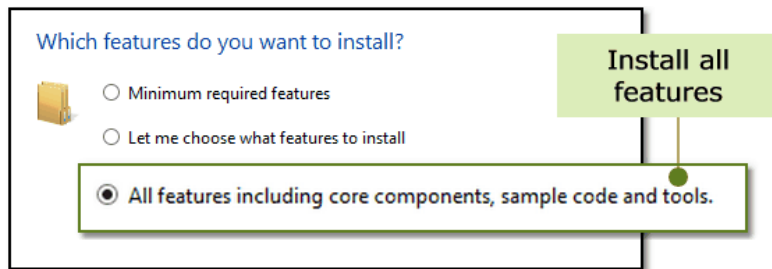
The client redistributable, PNDocConvClientSetup\_3.0.exe, is included as part of the Document Conversion Service install and needs to be run on each client computer to install the components that allow the connection between the client and the server.

It can be found in the \Samples\Redist folder under your Document Conversion Service installation path on the server.

Copy the client setup program from the server to the client computer or to a location that can be accessed from the client computer.

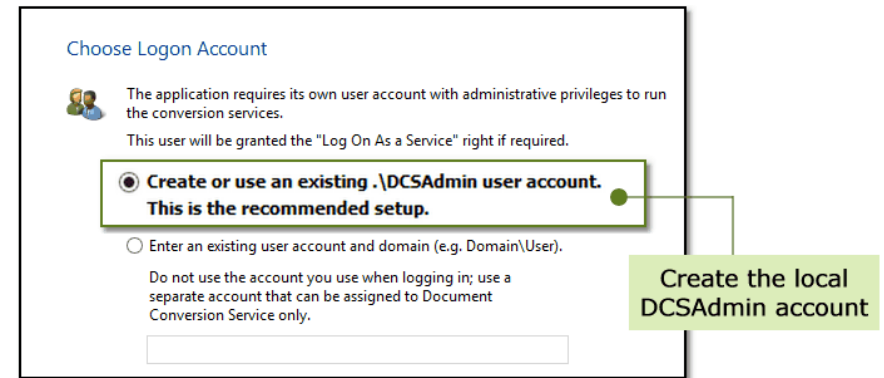
### Step 2: Installing the Redistributable

Install all features of the client redistributable. This includes the necessary components to allow the client to talk to the server, the desktop conversion tools, the Watch Folder Service, command line conversion tools and all additional sample code.



In real-world production environment, you often won't need all features of the client setup when configuring your clients. The section [The Client Setup Redistributable](#) covers how to install the minimum features, how to choose select features and how to install silently when bundled with your own install.

When prompted for the Logon Account create the local administrator account *DCSAdmin*. You must use the same password here that was used when creating this account on the server.



### Step 2: Conversion Profiles

Any [custom conversion profiles](#) that you had created will also need to be copied to each client machine as the client setup only installs the default profiles.

You can find the default profiles location quickly using the link, Open Conversion Profiles Folder, in the Start Menu.

### Step 3: Setting Client Logon Permissions

To give the required permissions to the client to communicate with the server, the client install also creates the local group *Document Conversion Service Users* and adds both the *DCSAdmin* account and the *Authenticated Users* group as members.

# PEERNET Document Conversion Service 3.0



## Step 4: Converting Remotely

For client-server conversion the client needs to know two things :

- the name of the server where Document Conversion Service is running, and
- the path to a temporary conversion folder that is accessible to both the client and the server.

The *DCSREMOTE* network share folder created on the server as part of the Document Conversion Service installation is specifically for use as the temporary conversion folder for remote conversion. It already has the required permissions for any users who are part of the *Document Conversion Service Users* group.

An example of the server name and path you would use is shown below; replace *DCS-CONV-1* with the name of your actual server.

DCS-CONV-1    \\DCS-CONV-1\DCSREMOTE

Both desktop conversion utilities can be configured for remote conversion by specifying the server name and this path to the shared folder. This same technique can be applied to the command line tools as well as your own programs using the PEERNET.ConvertUtility API.

Below is one of the desktop conversion utilities configured for remote conversion on a server named *DCS-CONV-1*.



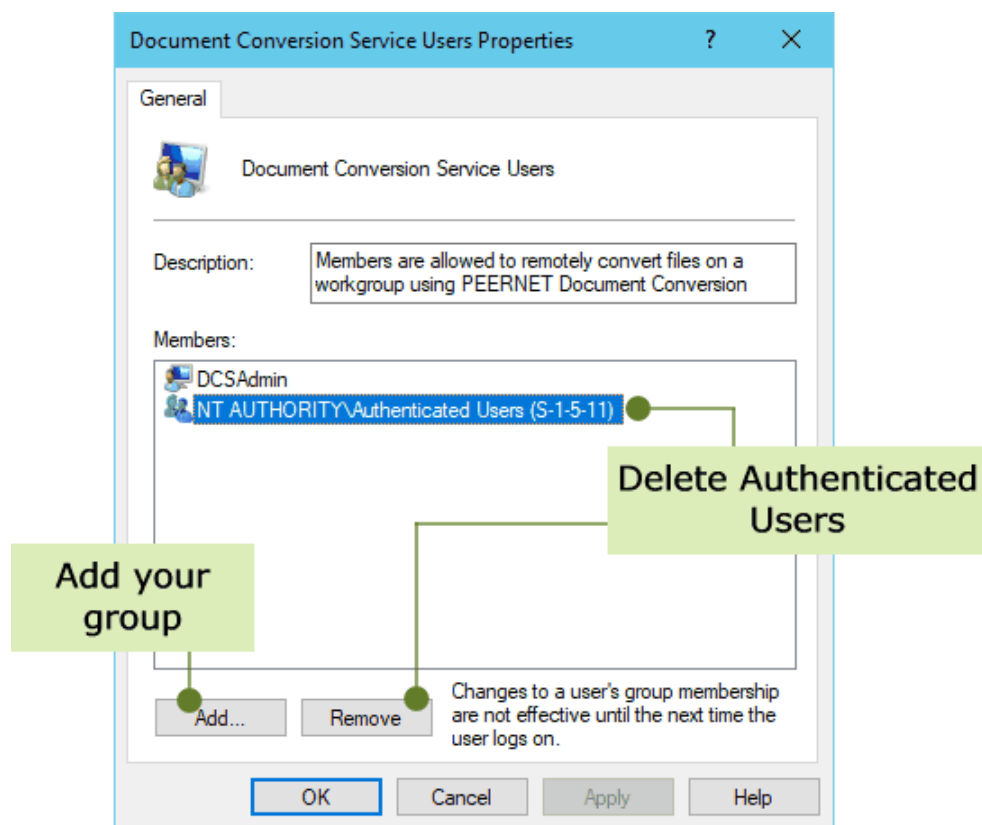


## Using a Different Domain Group

In some cases you may already have your own domain group that provides the permissions and security for the users you want to allow to do conversion.

To use your own group, change the member list of the *Document Conversion Service Users* group to remove the *Authenticated Users* group and adding your own group.

This can be done by editing the properties of the Document Conversion Service Users group through the *Local Users and Groups* section in the Computer Management applet in the control panel.



## Using Local Accounts on the Clients

The steps above assume that all computers are on the same domain and that the client logons are also domain accounts.

If the client account that is performing the conversion is instead a local account, an identical local account with the same user name and password must be added to the server.

## What about Workgroups?

If your server or client machines are on a workgroup, or in a mixed workgroup/domain environment, you will also need matching local accounts and passwords on the server for all client logons that will be converting.

## Local Account Permissions

For local accounts to work, leave the *Authenticated Users* group as a member of the Document Conversion Service Users. If you have replaced it with your own domain group, the local accounts will also need to be added to the members list individually on both the client and the server.



## Programming for Client Server Conversion

This guide has shown remote file conversion using one of the provided desktop conversion programs.

When using the command line tools, the Watch Folder Service or the PEERNET.ConvertUtility .NET API from your own programs, these tools also need to know the remote computer name and the path to a shared folder.

### Remote Conversion from the Command Line Tools

```
DCSConvertFile /P="TIFF 200dpi Monochrome"  
/C="DOC-CONV-SRV1;\DOC-CONV-SRV1\DCSREMOTE"  
"C:\Test\Document.doc"
```

### Remote Conversion from PEERNET.ConvertUtility

```
PNConversionItem resultItem = null;  
String strRemoteComputer = "DOC-CONV-SRV1";  
String strRemoteFolder = @"\\DOC-CONV-SRV1\DCSREMOTE";  
  
String strOutputFolder = @"C:\Test\Output";  
if ( !Directory.Exists(strOutputFolder) )  
{  
    Directory.CreateDirectory(strOutputFolder);  
}  
  
resultItem = PNConverter.ConvertFile(@"C:\Test\File.pdf",  
    strOutputFolder, // output folder  
    "ConvertedFromPDF", // converted file name  
    true, true, // overwrite existing, remove file ext  
    false, // do not create log  
    "TIFF 200dpi OptimizedColor", // profile  
    String.Empty, String.Empty,  
    null, // no custom user settings  
    strRemoteComputer, // DCS is running here  
    strRemoteFolder, // remote shared folder  
    String.Empty);
```

### Remote Conversion with Watch Folder Service

The Watch Folder Service can also be set up for remote conversion by specifying the name of the server and using the shared network path for the *Staging* and *Working* folders in each watch folder section.

This gives you the capability, if needed, to load balance your conversion on different remote servers by specifying which server is used for which folder.

```
<WatchFolders>  
  
<WatchFolder Name="Remove Conversion FAX TIFF Folder" >  
  <Settings>  
    <!-- Folder options -->  
    <add Name="InputFolder" Value="C:\PEERNET\InputFax\"/>  
    <add Name="SearchFilter" Value="*.*\"/>  
    <add Name="IncludeSubFolders" Value="True\"/>  
  
    <add Name="StagingFolder"  
      Value="\\DOC-CONV-SRV1\DCSREMOTE\WatchFolder\Staging\"/>  
    <add Name="WorkingFolder"  
      Value="\\DOC-CONV-SRV1\DCSREMOTE\WatchFolder\Working\"/>  
  
    <add Name="FailedFolder" Value="C:\PEERNET\Failed\"/>  
    <add Name="CompletedFolder" Value="C:\PEERNET\Completed\"/>  
    <add Name="OutputFolder" Value="C:\PEERNET\FAX TIFF OUT\"/>  
    <add Name="PollingInterval" Value="15000\"/>  
  
    <add Name="DCOMComputerName" Value="DOC-CONV-SRV1\"/>  
  
    <add Name="TestMode" Value="false" />  
    ....  
  </Settings>  
</WatchFolder>  
  
</WatchFolders>
```



## The Client Setup Redistributable

The client redistributable, PNDocConvClientSetup\_3.0.exe can be found in the \Samples\Redist folder under your Document Conversion Service installation path on your server and must be installed on all clients to allow remote conversion.

Any [custom conversion profiles](#) that you created will also need to be copied to each client machine.

Previously we installed the full version of the setup which includes all features of the client install. In most cases which features you will need will be determined by how you are integrating with Document Conversion Service.

Communication Component	✓	✓	✓
Default Conversion Profiles	✓	✓	✓
Desktop Conversion Apps		✓	Use the Choose Features window to select desired features.
Command Line Tools		✓	
Watch Folder Sample		✓	
Full Sample Code		✓	

## Installing Silently

The client setup can be installed as a separate step, called from within your application install or run silently using the command line arguments.

Only the minimum (BASIC) or Complete (FULL) install can be set via the command line.

### Client Install Command Line Parameters

/S - Silent Install	Run silently with no wizard.
PASSWORD="password"	The password for the DCSAdmin account, or the custom account set in the optional parameters.

SETUPTYPE=BASIC FULL	Choose the BASIC (minimum) or FULL (complete) install. Default is BASIC.
DCSUSER="domain\user"	Allows a different user account other than DCSAdmin for the client-server communication.



## Get Other Quick Start Guides

### Document Conversion Service Quick Start Guide

A short and quick guide to help you get the conversion service running and converting documents on your server. The [Document Conversion Service Quick Start Guide](#) covers starting the conversion service for the first time, using the logging console and converting documents.

### Watch Folder Conversion

Monitor any number of folders for documents to convert with the included Watch Folder Service utility. The [Watch Folder Quick Start Guide](#) introduces you to setting up folders, handling large volumes of files and running custom commands and other handy features. Perfect for companies with a small to medium volume of daily conversions on a single server.

### Clustered Watch Folder for Large Data

For larger companies with a need to convert an existing, very large volume of data, or a large volume of files daily, multiple installations of Document Conversion Service and the included Watch Folder service can provide high-performance clustering and fail over protection with load-balancing and 100% conversion stability. The [Clustered Watch Folder Conversion Quick Start](#) shows how easy it is to set up.

### .NET API Utility Quick Start Guide

With the included .NET library you can add document conversion directly into your own programs with as little as a single line of code. Have a look at the sample programs provided or follow the steps in the [.NET API Utility Quick Start Guide](#).

### Command Line Tools Guide

For Java programmers and adding conversion into scheduled tasks, batch files, or any program that can call an external program, command line tools for converting files and folders are included. If this is what you are looking for, the [Command Line Tools Quick Start Guide](#) will get you started.

### Our Support Team is Here to Help

Not sure where to go from here? Have questions? Our support team is always available to help you choose the correct solution for your conversion needs. Please [contact us](#) and we'll be in touch via e-mail, telephone or web meeting to help answer your questions.