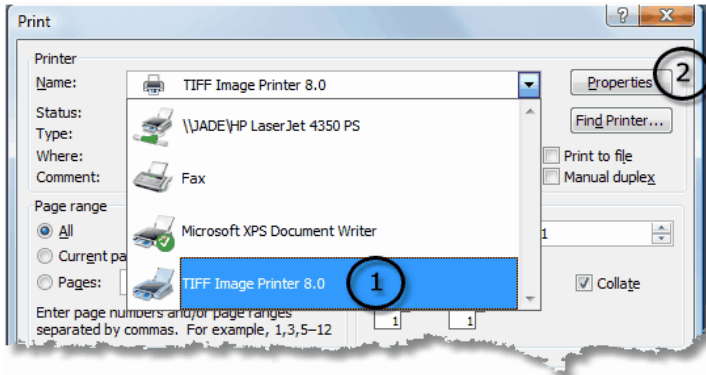


Thank you for choosing the TIFF Image Printer 8.0. When the TIFF Image Printer has been successfully installed on your computer it will be available from your Start menu, and as an icon in your Printers and Faxes folder.

Using the TIFF Image Printer to create TIFF images is a simple, 3-step process: **Print**, select **Driver Properties** and **Save** your image file.

1. PRINT

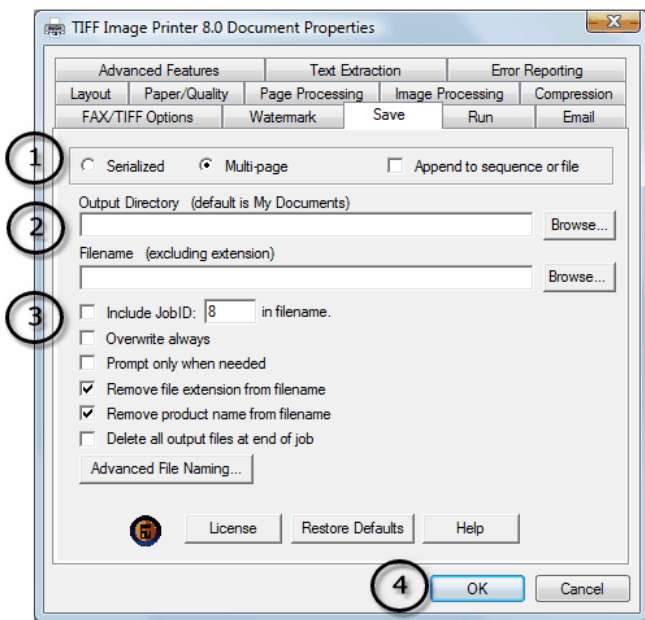
Select the **Print** option from your application's menu to send your document to the TIFF Image Printer 8.0.



1. Choose the TIFF Image Printer 8.0 from the printers listed in the Print dialog.
2. Click on the **Properties** button to change the TIFF Image Printer driver properties such as where to save the file, or what compression method to use.

2. SELECT DRIVER PROPERTIES

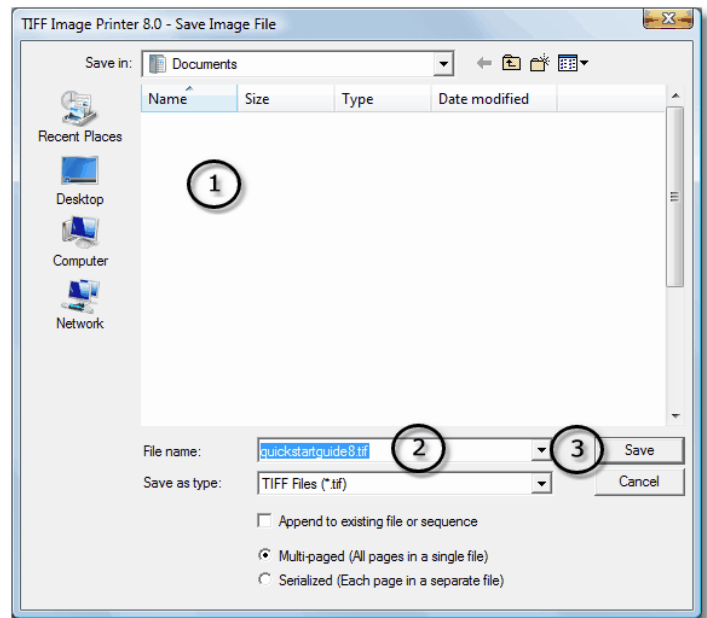
The **TIFF Image Printer Document Properties** dialog contains tabs of options that can be configured. The most common tabs used are the **Layout**, **Paper/Quality**, **Save**, **Compression** and **Image Quality** tabs.



1. TIFF image files can be serialized, where each page of your document is saved as a separate TIFF image; or multi-paged where your entire document becomes a single TIFF file containing a separate image for each page.
2. In the **Output Directory** and **Filename** fields, you can specify where to store the images and an optional filename to use. A blank filename will default to the printed document name.
3. Change **Prompting** and **Overwriting** options as required. These options control when the **Save Image File** dialog appears.
4. Select **OK** from the TIFF Image Printer 8.0 Document Properties dialog to close the dialog.

3. SAVE YOUR IMAGE

Select **Print** from the Print dialog to send your document to the driver. The **Save Image File** dialog will appear.



1. Browse to the location where you want to save the image.
2. The name of the printed document is already filled in for you but you can enter a different name if desired.
3. Press **Save** to finish the process.

COMMON QUESTIONS

How do I change the TIFF Image Printer properties so that all applications use the same settings?

From the Start menu, select All Programs – TIFF Image Printer 8.0 – Printing Preferences.

How can I configure the driver so that the Save Image File dialog box does not show every time I print?

On the **Save** tab of the TIFF Image Printer Document Properties dialog, enable the **Prompt Only When Needed** and **Overwrite Always** options.

How can I configure the driver to save all my images into the same folder?

On the **Save** tab of the TIFF Image Printer Document Properties dialog, enter the desired folder in the **Output Directory** option.

Do you have a COM interface that I can use in my program?

The TIFF Image Printer 8.0 includes the [PNSrv8 COM Interface](#) designed to allow you to integrate PEERNET's printers into your own applications or services. See our [Developer's Portal](#) for the complete user guide. Sample applications demonstrating all the ways you can integrate the printer with your application are also available.

Still have questions?

Visit the [PEERNET Forum](#) to search our knowledge base of frequently asked questions, or contact the [PEERNET Technical Support](#) team with your question.

CONTACT INFORMATION

Please contact us with any comments, feedback, or if you require more information.

Hours: Monday to Friday, 09h00 – 17h00 EST

Sales: peernet@peernet.com

Support: support@peernet.com

Phone: 1-800-883-7980 (North America only)
613-224-6894

Fax: 613-224-6899