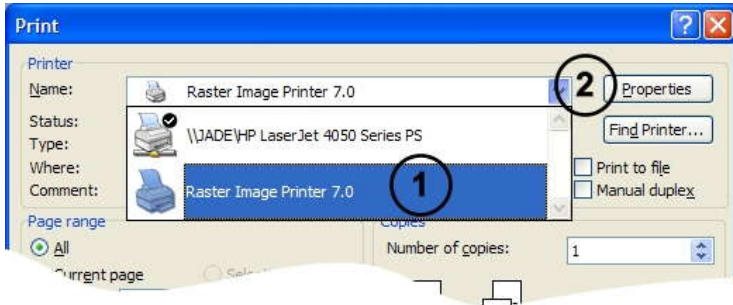


Thank you for choosing the Raster Image Printer 7.0. The Raster Image Printer has been successfully installed on your computer and is now available from your Start menu, and as an icon in your Printers and Faxes folder.

Using the Raster Image Printer to create raster images is a simple, 3-step process: **Print**, select **Driver Properties** and **Save** your image file.

1. PRINT

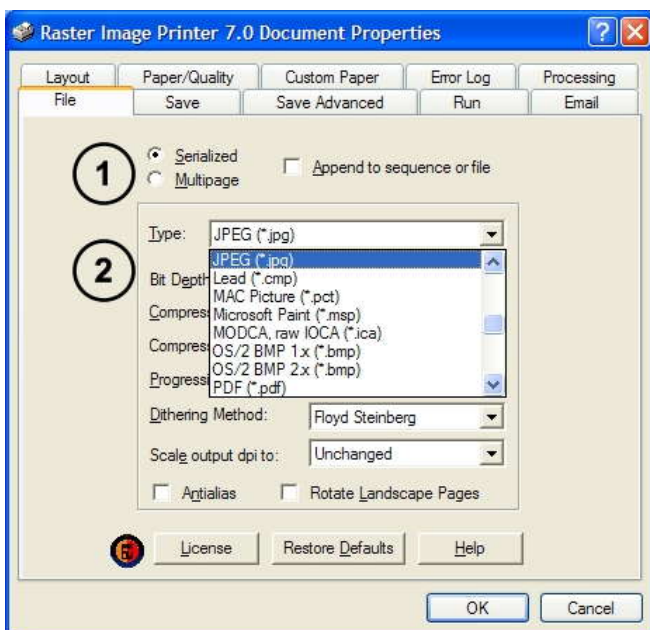
Select the **Print** option from your application's menu, and then choose the **Properties** button to change the driver options.



1. Choose the Raster Image Printer 7.0 from the printers listed in the Print dialog.
2. Click on the **Properties** button to change the Raster Image Printer driver properties such as what type of image to create.

2. SELECT DRIVER PROPERTIES

The **Raster Image Printer Document Properties** dialog contains tabs of options that can be configured. The most common tabs used are the Layout, Paper/Quality, File and Save tabs.



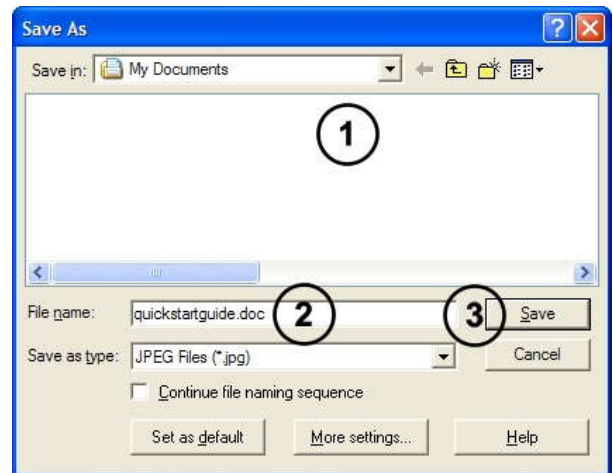
1. Image files can be serialized meaning each page of your document is saved as a separate image, or multipaged, meaning your entire document becomes a single, multipaged

image file. For example, a TIFF image can be multipaged, but JPEG images are always serialized.

2. From the **Type** list, choose what type of image you want to create. The list shows only serialized image types when the **Serialized** option is selected, or only multipaged image types when the **Multipaged** option is selected.

3. SAVE YOUR IMAGE

Select **OK** from the Raster Image Printer Document Properties to close the **Properties** dialog, and then select **Print** from the Print dialog to send your document to the driver. The **Save As** dialog will appear.



1. Browse to the location where you want to save the image.
2. The name of the printed document is already filled in for you, but you can enter a different name if desired.
3. Press **Save** to finish the process.

COMMON QUESTIONS

How do I change the Raster Image Printer properties so that all applications use the same settings?

From the Start menu, select All Programs – Raster Image Printer 7.0 – Printing Preferences.

How can I configure the driver so that the Save As prompt does not show every time I print?

On the **Save** tab of the Raster Image Printer Document Properties dialog, enable the **Prompt Only When Needed** and **Overwrite Always** options.

How can I configure the driver to save all my images into the same folder?

On the **Save** tab of the Raster Image Printer Document Properties dialog, enter the desired folder in the **Output Directory** option.

HINTS AND TIPS

Frequently Asked Questions:

<http://www.peernet.com/raster/faq.html>

TECHNICAL SUPPORT

Free unlimited support is provided for the full evaluation period and for the first 60 days from the date of purchase. For a minimal extra fee On-Going Support (OGS) can optionally be bought at the time of purchase. OGS provides unlimited telephone and email support as well as automatic access to all minor and major releases including upgrades for the term of the agreement. The terms of your OGS contract is found on your purchase confirmation.

CONTACT INFORMATION

Please contact us with any comments, feedback, or if you require more information.

Hours: Monday to Friday, 09h00 – 17h00 EST
Sales: peernet@peernet.com
Support: support@peernet.com
Phone: 1-800-883-7980 (North America only)
613-224-6894
Fax: 613-224-6899